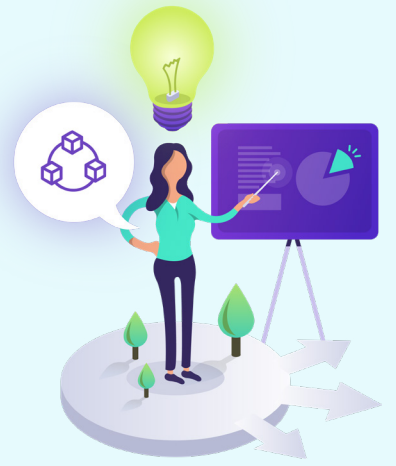


# Exam Delivery

## A Critical Component to Your Virtual Learning Environment

Assessment has become a commonly used term by educators, administrators, and parents. They provide a way for teachers to evaluate and grade students' overall understanding of what they've been learning over a period of time. In our new virtual education environment, educators are challenged to address both formative and summative assessment.

Most LMS platforms provide formative assessment features to measure student progress throughout the year. But as an educator, you need a reliable way to also measure summative performance. This needs rubrics, effective questions, and clear parameters.



### FORMATIVE

Identifies areas of struggle and learning gaps to support students throughout the learning process.

- Weekly quizzes
- In-class discussions
- Homework assignments



### SUMMATIVE

Evaluates student performance at the end of a unit, course or program.

- Standardized tests
- End of unit tests
- Final exams

### WHY ARE SUMMATIVE ASSESSMENTS TOOLS NECESSARY?

As school systems find themselves in a virtual or hybrid learning environment this semester, we must continue to assess students' learning. Formative assessment tools will help educators evaluate how the learning experience is progressing through the year. However, to truly assess student progress and understanding of the overall curriculum, educators need additional tools that will fairly and accurately assess each student's knowledge and understanding of the full semester. While this was easier in the classroom, we now need virtual tools that will provide the same standards, environment, and integrity.

## Four Elements A Virtual Assessment Tool Must Include:

### PROCTORED DASHBOARD

In order to provide a summative assessment, educators need the ability to load an exam to a customized testing environment. This environment must provide features such as roster control, test launch, exam time limit, and individual student status. In this new virtual environment, it's even more important that the educator controls the exam process and monitors students from afar.

### CHEAT MONITORING

Monitoring academic integrity is more important than ever as many students find themselves with the possibility of finishing their high school careers in a virtual classroom. Their final exams and grades will impact important future decisions. A virtual tool must monitor students during the exam to ensure an honest assessment.

### INTEGRATED VIDEO CONFERENCE

While cheat monitoring tools have focused on screen lockdown and browser monitoring, we now need to support all the students that will be taking major exams while at home. This provides new challenges to establishing academic honesty as phones, other computers, and family members are accessible. Integrating a video conference system into the virtual exam allows for live video and sound monitoring during the exam.

### EXAM SHARING & REPORTING

Summative assessments are important to understanding an individual student's learning cognizance, but the larger opportunity is also assessing the full district's knowledge and comprehension. A virtual tool should provide educators with the ability to share exams with fellow teachers for streamlined testing and reporting. This allows for continuity and, more importantly, reporting across the district.

Welcome to

# BrightShift

With BrightShift, you can use online assessments, exam delivery, and virtual classroom features to create your own hybrid learning approach and test summative performance with ease. While the major LMSs provide great formative assessment tools, they either do not provide or need expensive add-ons for summative assessments.

	PROCTOR DASHBOARD	CHEAT MONITORING	SECURE VIDEO MONITORING	EXAM SHARING & REPORTING
Schoology	✗	Third Party Add On	Third Party Add On	Only Questions
Google Classroom	✗	Third Party Add On	Google Meet	✗
Canvas	✗	✓	Third Party Add On	No Reporting
BrightShift	✓	✓	✓	✓

\*BrightShift is a SAAS platform that does not need installation or hardware configuration.